

Accotex & DAYTEX  
Product Portfolio

**Accotex**

# Elastomer Expertise

Product portfolio



Polymeric solutions  
for textile processing



# Elastomer Expertise

Accotex, the world's leading supplier of cots and aprons for the textile industry, is a subsidiary of the Rieter Group. Based in Muenster (Germany), Accotex creates customer value through system expertise, innovative solutions, after-sales excellence and a global presence. The leading position of Accotex cots and aprons is based on more than 100 years of elastomer expertise. The products are used, for example, in short and long staple spinning, rotor and air-jet spinning, and twisting.

Elastomer components by Accotex enable consistently high yarn quality in all process steps, resulting in a better fabric quality. The development team is continuously working on new elastomer compounds for even better results in the textile industry. Accotex aims to fulfil customers' needs with constant product quality in every order. Worldwide teams support customers in all matters around Accotex cots and aprons.

Accotex completes its extensive portfolio with the addition of DAYTEX, a leading manufacturer of shrinkage belts in the finishing as well as cots and aprons and texturing sector. Multinational teams are responsible for the development, manufacturing and distribution of DAYTEX products. A network of experienced representatives around the globe provides the highest level of service and expertise to ensure the optimal performance of our products.

4	Outstanding advantages
6	Cots
8	Aprons
10	ACC – new era in compound technology
12	Short staple spinning
12	Spinning preparation
14	Ring- and compact spinning
16	Air-jet spinning
18	Rotor spinning
20	Long-staple spinning
20	Spinning preparation
22	Ring spinning
24	Twisting
25	Glass fiber spinning
26	Accotex DAYTEX
27	Texturing
28	Weaving & knitting
29	Finishing
30	Accessory

# OUTSTANDING

## ADVANTAGES

# Elastomer components

### Highest Product Reliability

By using high quality, reliable and stable raw materials, the highest possible product reliability is achieved.

### Perfect Running Behaviour

Perfect running behavior is characterized by fewer laps, fewer end breaks and fewer unbound fibers.

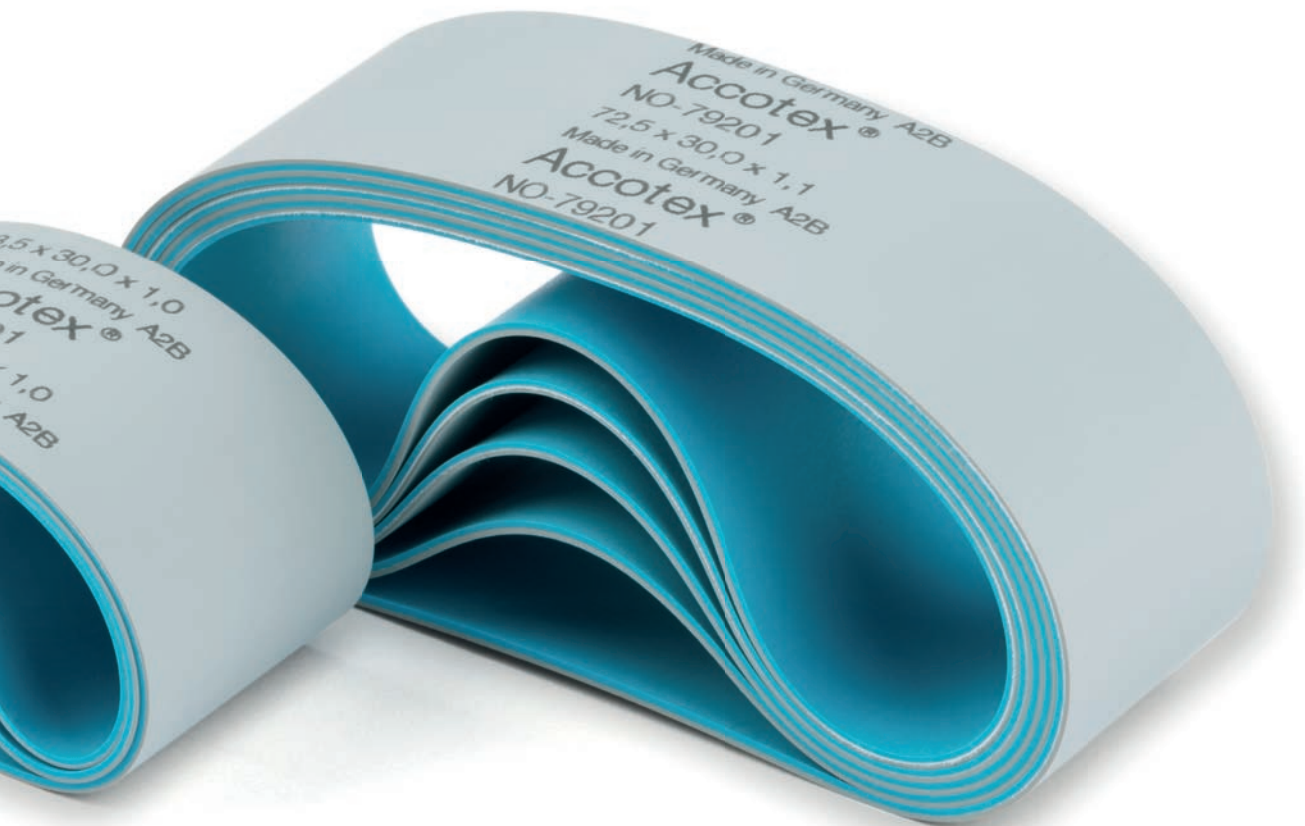


## State-of-the-Art Production Facility

Stable compound quality from shipment to shipment due to highest sophisticated mixing technology.

## Outstanding Life Time

Resistance to all common fiber finishes, paints and greases, as well as various climatic conditions over the entire service life.



# Cots

**Accotex Cots distinguish by an excellent performance and thus guarantee the production of a stable yarn quality over the whole cot lifetime. The perfect running behaviour is featured by less laps, less end breaks and less unbound fibers. All these properties result into less machine standstills over the cot life, which guarantees highest machine efficiency.**

## Quality standard

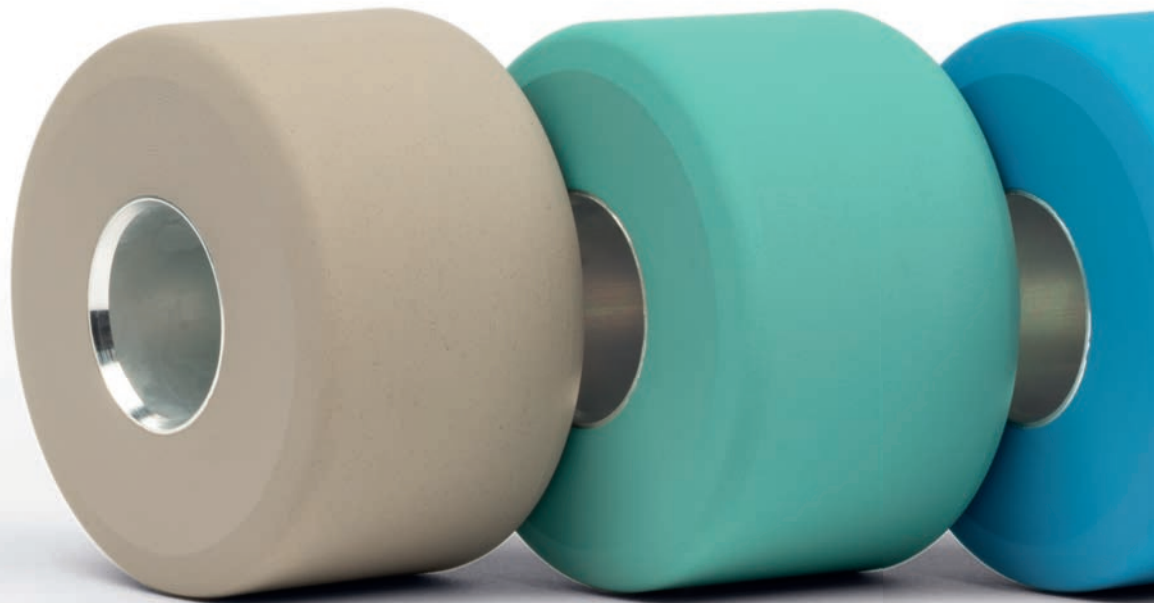
The highest product reliability is characterized by the outstanding product quality, which comes along with the usage of reliable and stable raw materials.

## Manufacturing expertise

The state-of- the-art production facility with its newest sophisticated mixing technologies enables a stable compound quality from shipment to shipment.

## Area of application

Accotex Cots are designed to meet the demands of all fibers and do perform best even under different climate conditions.



## Types, sizes and surfaces

Pressfit cots are an invention by Accotex. They run virtually tension free, providing high performance and long durability.

Accosmart, the special cot concept, guarantees high and constant yarn quality with longer service life between the single grinding cycles.

Reinforced cots are used in applications where roller diameter or roller tolerance does not permit the use of Pressfit cots.

## At a glance

- Excellent cot performance and thus stable yarn quality over the whole cot life
- Less laps, less end breaks, less unbound fibers Less machine stand stills over cot life means higher efficiency
- Usage of highest quality, reliable and stable raw materials
- Processing of all types of fibers under different climate conditions
- Stable compound quality from shipment to shipment due to highest sophisticated mixing technology
- perfect grindability



# Aprons

Accotex Aprons distinguish by a perfect running behaviour, which comes along with good friction properties over the whole apron life time. Further Accotex Aprons are running vibration free, with highest possible crack resistance and lowest slippage tendency. Even apron breakages are very low for Accotex Aprons, which results into less downtime for the single spindle position.



## The Standard

All these features result into less machine standstills or interruptions, which guarantees highest possible machine efficiency.

## Area of application

All in all Accotex Aprons stand for a trouble free processing of all common fibers and under various climate conditions.

## Manufacturing expertise

Highest compound technology combined with high-tech chemistry, selected high quality raw materials and state-of-the-art production facility with newest mixing technology results into highest product reliability.



## Product promise

Precise product dimensions and highest dimensional stability characterize Accotex Aprons. The stable and consistent construction of the Accotex Aprons is the key for superior life cycles for all common fibers. Sufficient resistance to all popular fibre dressings, colours and greases comes along.

## Types, sizes and surfaces

Accotex Aprons are available in a wide range of dimensions. Certain common sizes are even available with a knurled inside structure. Skived or skived and pre-glued versions are available in a wide range of dimensions.

## What to expect

- Good friction properties and running behaviour over the whole apron life
- No vibration, no stress cracking, lowest slippage tendency
- Less breakages – less downtime of single spindles
- Less machine stand stills or interruptions – higher efficiency
- Trouble free processing of all common fibers under different climate conditions
- Highest compound technology and high-tech chemistry due to perfect raw material selection and sophisticated and consistent mixing technology
- Precise product dimension
- High dimensional stability
- Stable and consistent construction
- Superior life cycle for all common fibre types
- Sufficient resistance to all popular fibre dressings, colours and greases
- Skived or skived and pre-glued versions
- Certain sizes with knurled inner layer



# ACC – New Era in Compound Technology

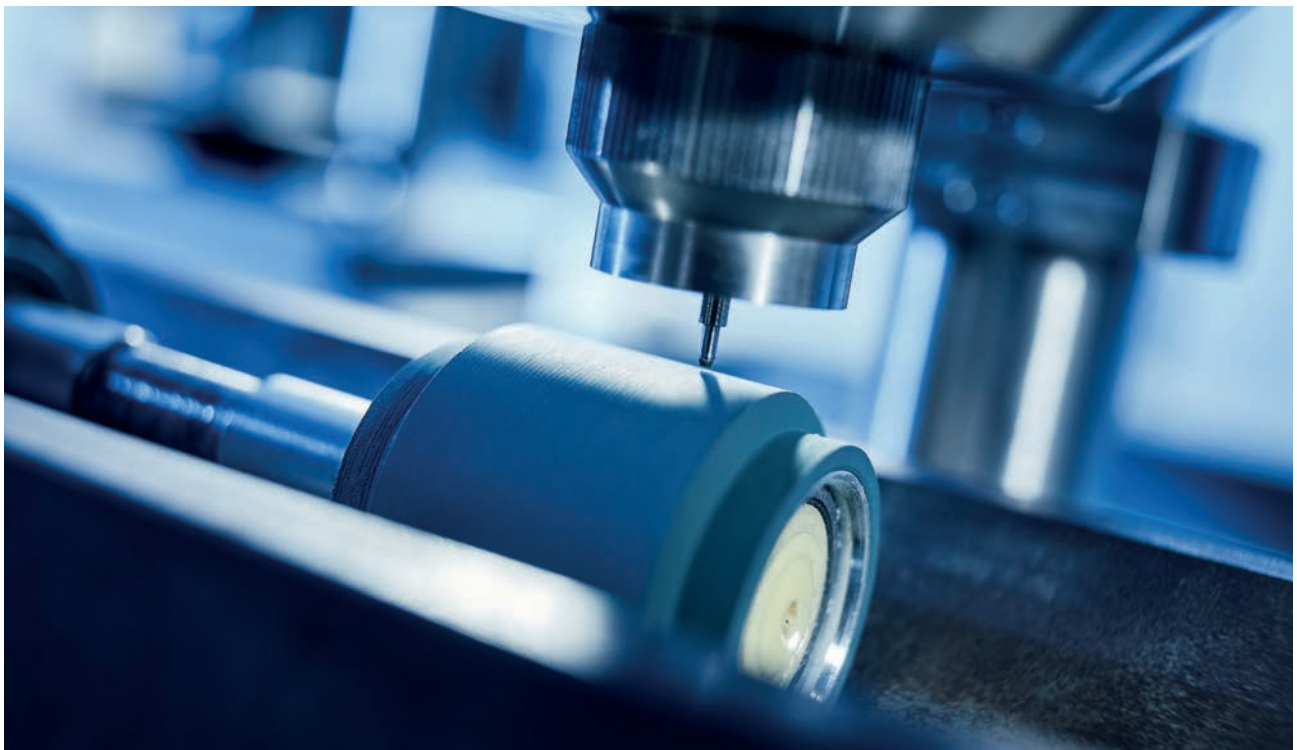
## The ACC series

Accotex starts a new era in compound technology. The development of a new formulation – using high quality raw materials of the latest generation combined with latest rubber mixing technology – revolutionized rubber cots for spinning machines. The successor to the J series signifies the following: AC for Accotex and C for cots, the number after ACC indicates the Shore A hardness.

With the ACC series, Accotex sets new standards in cot quality. In the combination of the best raw materials, a revolutionary compound formulation and modern kneading machines, Accotex was able to create many improvements for the spinning sector.

## Benefits

- Reduced deformation of the cot, resulting in longer intervals between grinding processes (up to 50% for compact applications)
- Flexibility, as suitable for all fiber types and no constant changeover on the machine is required.
- Exchange of both shore hardnesses in the drafting system, allowing the customer to better influence yarn qualities
- Improvement of elasticity



## ACC64 + ACC68

The ACC64 and ACC68 compact spinning cots achieve an increase in grinding intervals of up to 50% and offer the spinner full flexibility due to the interchangeability of the delivery roller and the compact cot on compact spinning machines:

### Up to 60 days grinding interval

Both cots exhibit unsurpassed creasing performance resulting in up to 50% longer service life without compromising yarn quality and grindability.

### Highest flexibility

The ACC64 and ACC68 are suitable for any type of staple fiber and yarn count. Depending on the yarn count and type of fiber, the cots can be switched easily from front to delivery compacting roller and vice versa for full flexibility.

### Excellent anti-lapping properties

Thanks to new polymer technology, the ACC64 and ACC68 cots offer excellent anti-lapping properties without the need for any additional treatment. Cot maintenance is reduced and machine downtime minimized.



ACC64 (left) and ACC68 (right)

## ACC80

The latest Accotex series of cots for air-jet spinning, the ACC series, features high quality material and the latest rubber mixing technology. The ACC80 is a revolutionary rubber cot for air-jet spinning with outstanding performance:

### Extended lifetime

Made of the best raw materials, an exceptional compound formulation and the latest mixing technology, the ACC80 cot reaches phenomenal grinding intervals, up to 50% longer than others in its category.

### Improved grindability

The ACC80 sets a new benchmark in grindability. This revolutionary cot is faster and easier to bring to target accuracy when grinding.

### Increased heat resistance

Adapted to the increased speeds of today's air-jet machines, the ACC80 offers exceptional heat resistance, even under 60 to 70 degrees Celsius.



ACC80



# Short-Staple Ring Spinning

## Spinning preparation



## Drawing

			
<b>Type and/or application</b>	<b>Draw frame roller cot</b>	<b>Draw frame roller cot</b>	<b>Draw frame roller cot</b>
Fibers	Co	Co Blends MMF	Blends MMF
Product   Color   Shore A hardness	121   black   70	J-470   green   70	NO-714   light green   80

			
<b>Type and/or application</b>	<b>Top and bottom apron</b>	<b>Clearer tubes</b>	
Fibers	Co Blends MMF	All	
Product   Color   Shore A hardness	J-490   gray   83	NO-780P   gray	

Co Cotton  
MMF Manmade fibers

## Combing



Type and/or application	Detaching roller cot	Detaching roller cot
Fibers	Co Blends MMF	Co Blends MMF
Product   Color   Shore A hardness	J-463   lavender   63	J-470   green   70



Type and/or application	Drafting unit roller cot	Drafting unit roller cot
Fibers	Co Blends MMF	Co Blends MMF Wo
Product   Color   Shore A hardness	J-476   blue   76	J-490   gray   83

## Roving



Type and/or application	Front roller cot	Front and back roller cot
Fibers	Co Blends MMF	Co Blends MMF
Product   Color   Shore A hardness	J-476   blue   76	J-490   gray   83



Type and/or application	Top and bottom apron	Top and bottom apron	Apron cradle roller cot
Fibers	All	All	Co Blends MMF
Product   Color   Shore A hardness	NO-78210G,   gray/green	NO-78210GX   gray/gray	ME-480   black   80

Co Cotton  
MMF Manmade fibers

# Short-Staple Spinning

Ring- and compact spinning



## Compact spinning



Type and/or application	Front and compact roller cot	Front and compact roller cot	Compact apron
Fibers	All	All	All
Product   Color   Shore A hardness	ACC64   berry   64	ACC68   olive   68	LongLife   gray/gray



Type and/or application	Front roller cot Compact applications	Front roller cot, Compact + conventional applications, medium counts	Front and back roller cot for all applications, medium coarse counts
Fibers	Co (combed)	All	All
Product   Color	Accosmart AS-6   lavender	Accosmart AS-7   green	Accosmart AS-8   blue
Shore A hardness	Working layer equals to 63 Shore A	Working layer equals to 70 Shore A	Working layer equals to 76 Shore A

## Ring spinning



Type and/or application	Front roller cot		Front roller cot		Front roller cot	
Fibers	Co (combed)	≥ Ne 60	Co (combed) Blends MMF	≥ Ne 30 ≥ Ne 40 ≥ Ne 50	Co (carded and combed) Blends MMF	≥ Ne 18 ≥ Ne 20 ≥ Ne 30
Product   Color   Shore A hardness	J-460   burgundy   60		J-463   lavender   63		J-465   turquoise   65	



Type and/or application	Front roller cot		Front and back roller cot		Front and back roller cot	
Fibers	Blends	≥ Ne 30 ≥ Ne 30	Co (carded) Blends MMF	≥ Ne 20 ≥ Ne 30 ≥ Ne 30	Co (carded) Blends MMF	≥ Ne 10 ≥ Ne 18 ≥ Ne 18
Product   Color   Shore A hardness	J-468   brown   68		J-470   green   70		J-476   blue   76	



Type and/or application	Front and back roller cot for general purpose		Top and bottom apron		Top and bottom apron	
Fibers	All		All		All	
Product   Color   Shore A hardness	J-490   gray   83		NO-79201   gray/blue		NO-79201 knurled   gray/blue	



Type and/or application	Top and bottom apron		Top and bottom apron		Top and bottom apron	
Fibers	All		All		All	
Product   Color	NO-78210GX   gray/gray		NO-78210G   gray/green		NO-78210G-knurled <sup>1</sup>   gray/green	

<sup>1</sup> knurled version available with 72.5/76.3/79.0 mm inner diameter



Type and/or application	Apron cradle roller cot	
Fibers	All	
Product   Color   Shore A hardness	ME-480   black   80	

Co Cotton  
MMF Manmade fibers

# Short-Staple Spinning

Air-jet spinning





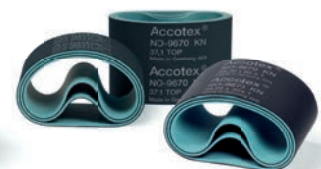
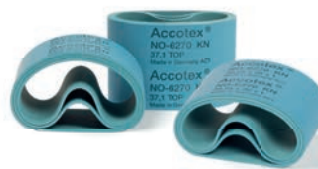
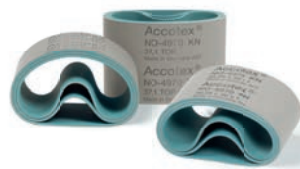
## Air-jet spinning



Type and/or application	Front roller cot	Front roller	Front roller cot
Fibers	Co Blends MMF	Co Blends MMF	Co Blends MMF
Product   Color   Shore A hardness	ACC80 <sup>2</sup>   cinnamon   80	J-490 S <sup>2</sup>   reddish brown   72	J-476 <sup>2</sup>   blue   76



Type and/or application	Front roller cot	Apron cradle roller cot	Back roller cot
Fibers	Co Blends MMF	Co Blends MMF	Co Blends MMF
Product   Color   Shore A hardness	J-490 <sup>2</sup>   gray   83	118   dark gray   72	J-490   gray   83



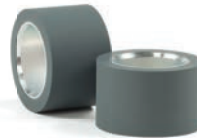
Type and/or application	Top and bottom apron	Top apron	Bottom apron
Fibers	100% Co Blends	Co Blends MMF	CV, PES or other MMF Blends
Product   Color	NO-4970 KN   gray/green	NO-6270 KN   blue/green	NO-9670 KN   black/green

<sup>2</sup> Bridge length:  
MMF 15.8 mm  
Blends: 17.8 mm  
CO: 21.8 mm  
2nd OD: 25.0 mm

Co Cotton  
MMF Manmade fibers

# Short-Staple Spinning

## Rotor spinning



Type and/or application	Nip roller cot	Nip roller cot	Nip roller cot
Fibers	Co Blends MMF	Blends MMF	All
Product   Color   Shore A hardness	121   black   70	118   dark gray   72	J-490   gray   83

Co Cotton  
MMF Manmade fibers



# Long-Staple Spinning

Spinning preparation



## Blending & Drawing



Type and/or application	Front and back roller cot
Fibers	Wo Blends MMF
Product   Color   Shore A hardness	J-490 EasyFit   gray   83

Wo Wool  
MMF Manmade fibers

## Finisseur



Type and/or application	Front and back roller cot	Front and back roller cot	Top and bottom apron cot
Fibers	Wo MMF	Wo Blends MMF	Wo Blends MMF
Product   Color   Shore A hardness	J-470   green   70	J-490   gray   83	NO-78210*X   gray/dark-gray

## Roving



Type and/or application	Front and back roller cot	Apron roller cot	Top and bottom apron
Fibers	Wo Blends MMF	Wo	All
Product   Color   Shore A hardness	J-490   gray   83	ME-480   black   80	NO-78210GX   gray/gray



Type and/or application	Top and bottom apron
Fibers	All
Product   Color	NO-79201 knurled <sup>1</sup>   gray/blue

<sup>1</sup> knurled version available with 72.5/76.3/79.0 mm inner diameter

## Ballon cots



Type and/or application	Balloon cot
Fibers	All
Product   Color	NO-780B <sup>3</sup>   gray

<sup>3</sup> Wall thickness (mm): 1.7, 2.0, 2.2, 2.5

Wo Wool  
MMF Manmade fibers

# Long-Staple Spinning

Ring spinning



## Ring spinning



Type and/or application	Front roller cot	Front roller cot	Front roller cot
Fibers	Wo ≥ Ne 80	Wo	Wo Blends MMF
Product   Color   Shore A hardness	J-460   burgundy   60	J-463   lavender   63	J-470   green   70



Type and/or application	Front roller cot	Back roller cot	Apron roller cot
Fibers	Wo Blends ≥ Ne 30 ≥ Ne 30	Wo Blends MMF	All
Product   Color   Shore A hardness	J-476   blue   76	J-490   gray   83	ME-480   black   80



Type and/or application	Front and compact roller cot	Front and compact roller cot	Compact apron
Fibers	All	All	All
Product   Color   Shore A hardness	ACC64   berry   64	ACC68   olive   68	LongLife   gray/gray



Type and/or application	Top and bottom apron	Top and bottom apron	Balloon Cot
Fibers	All	All	All
Product   Color	NO-78210GX   gray/dark-gray	NO-79201   gray/blue	NO-780B <sup>3</sup>   gray

<sup>3</sup> Wall thickness (mm): 1.7, 2.0, 2.2, 2.5

Wo Wool  
MMF Manmade fibers

# Twisting



**Type and/or application**

Fibers

**Twister Cot**

All

**Sleeve**

All

---

Product | Color | Shore A hardness

J-490 | gray | 83

TW-450X | gray/gray | 65

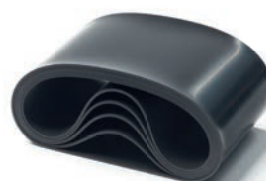
---



# Glass Fiber Spinning



Type and/or application	Glass forming apron	Glass forming apron	Glass forming apron
Fibers	Coarse	Fine	Fine
Product   Color   Shore A hardness	946   black   1-2 $\mu$ Ra	946 FG3   black   < 0.85 $\mu$ Ra	51 FG3*4+ 51 FG3*   black   < . 5 $\mu$ Ra



Type and/or application	Glass forming apron	Glass forming apron
Fibers	Fine	Ultra fine
Product   Color   Shore A hardness	546 FG3   black   $\leq$ 0,5 $\mu$ Ra	518 SF*   black   < 0.2 $\mu$ Ra

\* Additional product differentiation: depending on the sizing formulation

# Accotex DAYTEX

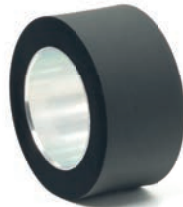
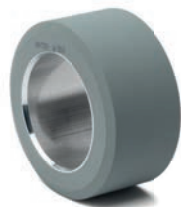
## Texturing and finishing products

Accotex DAYTEX is the leading manufacturer of products for texturing and finishing applications. Experienced experts in the field of rubber applications as well as natural rubber from approved plantations in combination with long standing manufacturing expertise ensure the constant product quality.

Multi-national teams are responsible for the development, manufacturing and sale of Accotex DAYTEX products.



# Texturing



Type and/or application	Texturing cot	Texturing cot
Fibers	All MMF	All MMF
Product   Color   Shore A hardness	836   gray   75	121   black   70













Type and/or application	Texturing apron	Texturing apron
Fibers	All MMF	All MMF
Product   Color	203 T   gray/light gray	T-4347   red/gray

MMF Manmade fibers

# Weaving & Knitting

## Roll coverings



			
<b>Compound</b>	<b>Cork &amp; rubber</b>	<b>Cork &amp; rubber</b>	<b>Cork &amp; rubber</b>
Backing   Surface Finish	Co   Smooth	Co   Smooth	Co+PES   Smooth
Product   Color   Shore A hardness	DK153 with PSA   black   45 +/- 10	DK154 (without PSA)   black   45 +/- 10	DK107   tan   45 +/- 10
			
<b>Compound</b>	<b>Nitrile rubber</b>	<b>Nitrile rubber</b>	<b>Carboxylated rubber</b>
Backing   Surface Finish	Co   Smooth	Co   Sand finish	Co + PES   Sand finish
Product   Color   Shore A hardness	N0732   gray   42 +/- 5	SF150   orange   60 +/- 5	G520   white   75 +/- 5
			
<b>Compound</b>	<b>Carboxylated rubber</b>	<b>Natural rubber</b>	<b>Natural rubber</b>
Backing   Surface Finish	Co + PES   Rough top	Co   Smooth	Co + PES   Embossed
Product   Color   Shore A hardness	G330   gray/yellow   65 +/- 5	G530   tan   45 +/- 5	G530E   tan   45 +/- 5
			
<b>Compound</b>	<b>PVC</b>	<b>Nitrile rubber</b>	<b>Nitrile rubber</b>
Backing   Surface Finish	Co + PES   Smooth	Co + PES   Sand finish	Co + PES   Smooth
Product   Color   Shore A hardness	BR14   light blue   72 +/- 5	G320   blue   60 +/- 5	G310   dark blue   65 +/- 5
			
<b>Compound</b>	<b>Nitrile rubber</b>	<b>Natural rubber</b>	
Backing   Surface Finish	Co + PES   Rough top	Co + PES   Rough top	
Product   Color   Shore A hardness	G310E   dark blue   65 +/- 5	SF150   tan   39 +/- 5	

Co Cotton  
PES Polyester

# Finishing

## Sanforizing



**Type and/or application**

Fibers

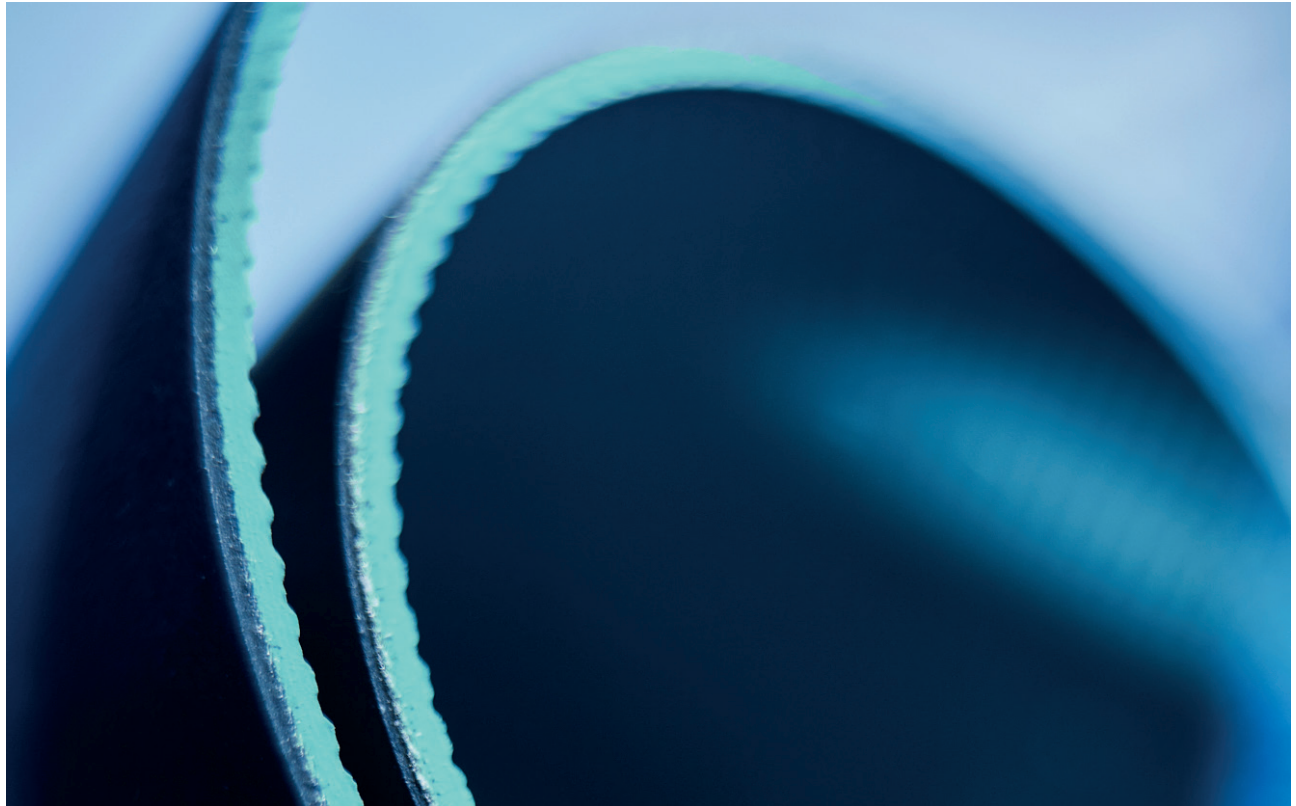
Product | Color | Shore A hardness

**Shrinkage belt**

From heavy to light fabric including comfit and knitted goods

DAYTEX 768 | light tan | 38 - 40

# Accessory

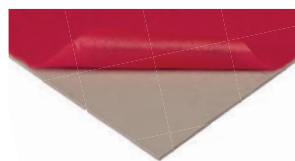


## Clearer cover



<b>Type and/or application</b>	<b>Clearer cover</b>
Fibers	All
Product   Color	NO-780P   gray

## DAYTEX Patching kit



<b>Type and/or application</b>	<b>Shrinkage belt repair kit</b>
Product   Color	DAYTEX patching kit   red





**Rieter Components Germany GmbH**

Accotex

Branch Muenster

Gustav-Stresemann-Weg 1

48155 Muenster

Germany

T +49 251 60938 0

info@accotex.com

[www.accotex.com](http://www.accotex.com)

The data and illustrations in this brochure and on the corresponding data carrier refer to the date of printing. Accotex reserves the right to make any necessary changes at any time and without special notice. Accotex systems and Accotex innovations are protected by patents.

3427-v2 en 2310